

Polypropylene Gravity Louvre Vent

Efficiently manage airflow entering and exiting your home.

Description:

The Polypropylene Gravity Louvre Vents are engineered for optimal airflow featuring louvres that open to release air and close when not in use, effectively preventing wind drafts, pests, and vermin from entering the system. Constructed from durable Polypropylene, the Louvre ensures durability and reliability in most residential areas.

Installation:

The Louvre is only suitable for through the wall installation only. To efficiently exhaust through the wall the Louvre must be screwed into the wall's surface.

Components:

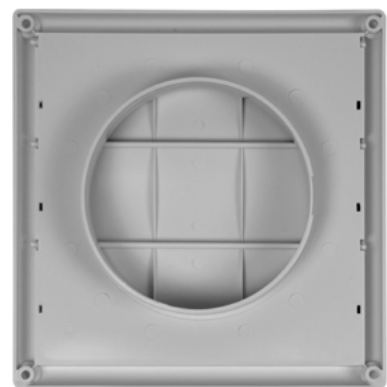
1. Polyprop Gravity Louvre Vent

Construction:

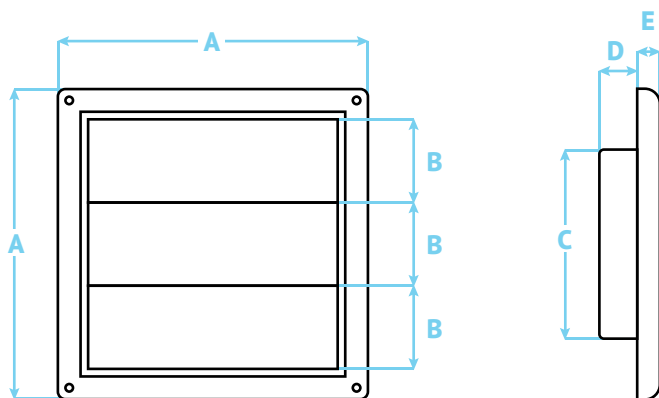
The Louvre is constructed from durable Polypropylene plastic and has a UV-Resistant additive.



For maximum airflow the Polypropylene Gravity Louvre vent does not come with a mesh insert



Dimensions (mm)					
Model No.	A	B	C	D	E
HSR4W / HSR4B	150	38	100	25	15
HSR5W / HSR5B	205	60	125	25	15
HSR6W / HSR6B	205	60	150	25	15
HS8W	250	58	200	30	15



Please Note: Being constructed from Polypropylene, our vents do not comply to a BAL Rating and should not be used in Bushfire Zone. It is recommended that a qualified Tradesperson is used to install the Plastic Gravity Louvre Vent and any through the wall ventilation.

Polypropylene Gravity Louvre Vent

Complies:

The Polypropylene Gravity Louvre Vents comply with the Australian and New Zealand Standard Code: AS1668.2 as they are UV-Resistant.

Compliance with NCC Condensation Management:

The Polypropylene Gravity Louvre Vents fulfills all Condensation Management requirements under the Australian National Construction Codes (NCC) 3.8.7.3 and 3.8.7.4.

Compatible:

Deflecto highly recommends using a fire-rated flexible ducting when using the Dome Vent for any under the eave application.



Airflow:

Airflow (Outlet)				
Model No.	Inner Dimensions	Wind Velocity (m ³ /s)	Air Outlet Cross-Sectional Area of Air Outlet	Airflow Capacity (m ³ /s)
HSR4W / HSR4B	100mm	2	0.0125	90.3
HSR5W / HSR5B	125mm	2	0.0310	222.9
HSR6W / HSR6B	150mm	2	0.0310	222.9
HS8W	200mm	2	0.0510	367.5