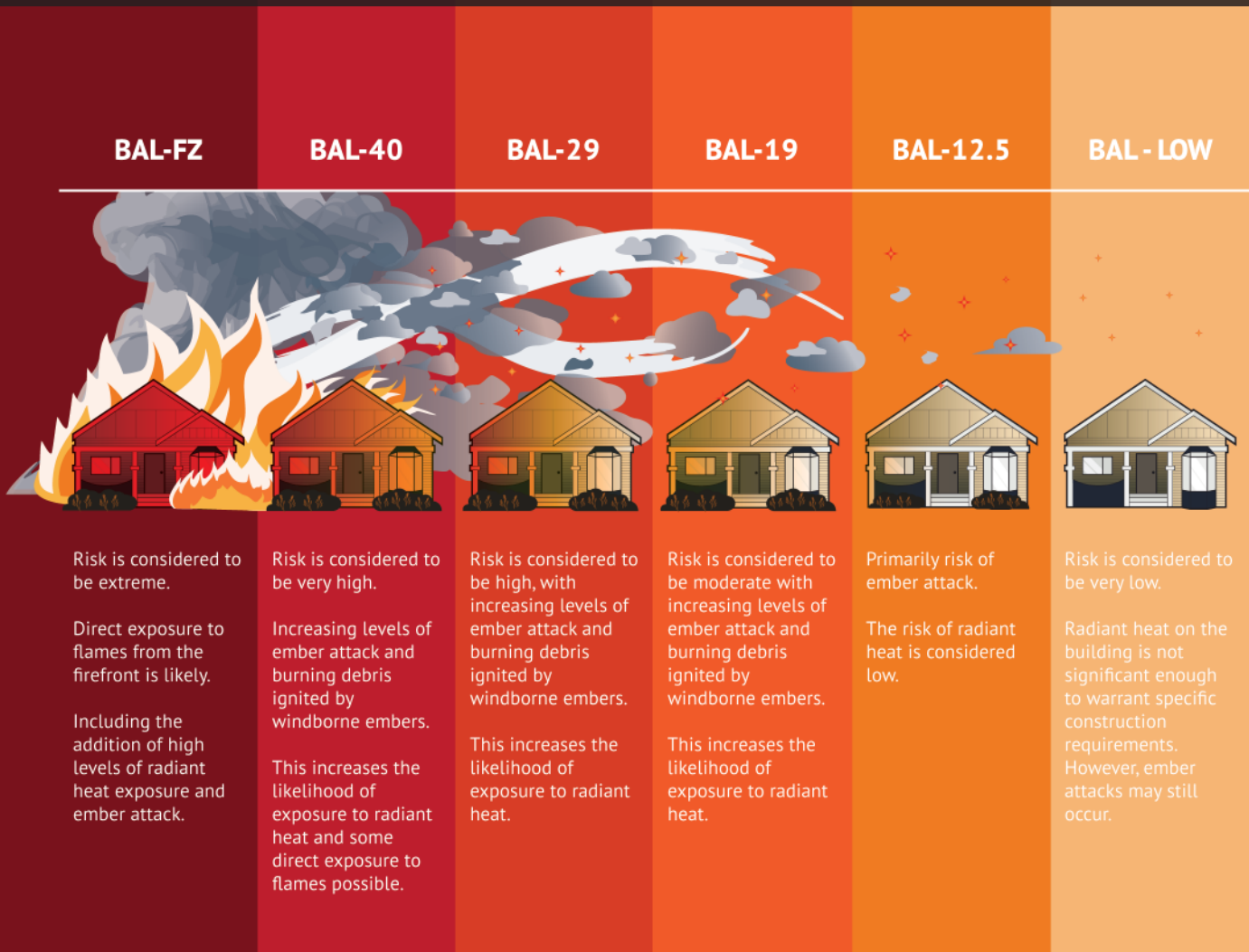


Bushfire Attack Level BAL RATINGS



Our Vents that are BAL40 Rated:



Dome Vent
Stainless Steel 316
100mm | 125mm
150mm | 200mm*



Eave Vent
Stainless Steel 316
100mm | 125mm
150mm | 200mm*



Gravity Louvre
Stainless Steel 316
100mm | 125mm
150mm | 200mm*



Hood Vent
Stainless Steel 316
100mm | 125mm
150mm



Mushroom Cowl
Aluminium with Steel Mesh
100mm | 125mm
150mm | 200mm



Our Vents comply with **BAL40 (Bushfire Attack Level)** as our vents are supplied with a cinder mesh insert or surrounding.

*Our 200mm Exhaust Vents are constructed from 304-Grade Stainless Steel. These vents still comply to BAL40 Standards